

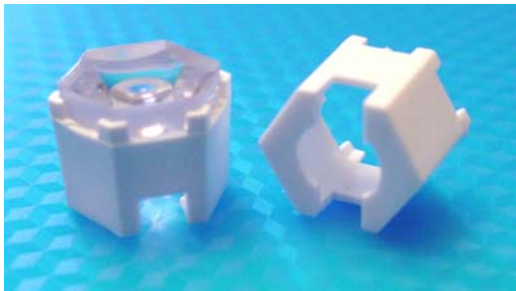


Our Focus is in Plastics

Polymer Optics Ltd.

6 Kiln Ride, Wokingham,
Berks., RG40 3JL, England
Tel/Fax: +44 (0) 1189 893341
www.polymer-optics.co.uk

Standard Lens Holder - Part No. 121

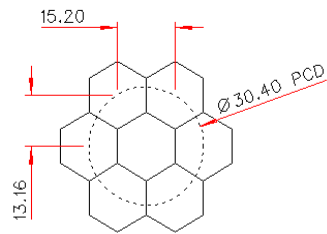
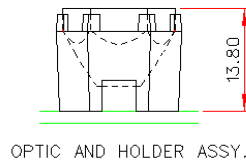
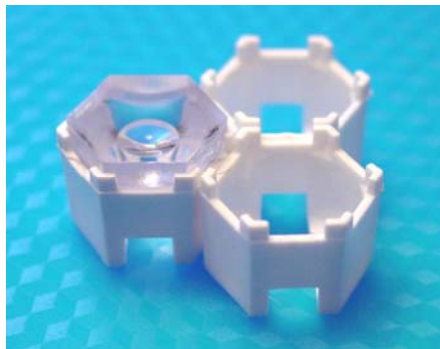


- Designed for use with Polymer Optics “Modular LED Optics”[®] and other custom Polymer Optics designs
- Designed for LUXEON[®] I Star and LUXEON[®] I, III, and V Emitter populated PCB’s
- Simply mounts onto PCB and self-aligns to LUXEON[®] Emitter
- Precision moulded in optical grade Polycarbonate for thermal stability and system durability
- Part of the Polymer Optics “Modular LED Optics”[®] range

Polymer Optics “Modular LED Optics”[®] design, based on a hexagonal format, allows maximum packing density and assembly flexibility

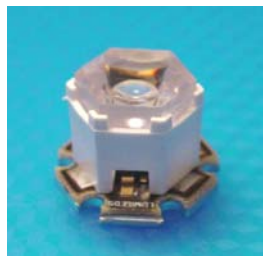
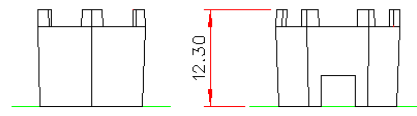
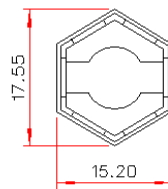
Alternative Star Holder (Part No. 128) available for LUXEON[®] I and III Star formats which have different mounting heights

K2 Holder available for LUXEON[®] K2 Emitter

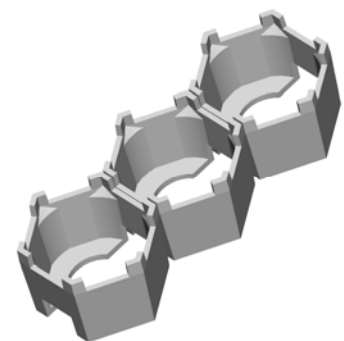


NESTED COMPONENTS ON 30.4MM PCD

Typical dimensional tolerances to +/-0.2mm



121 Holder and 120 Optic mounted on LUXEON[®] I Star PCB



Due to continuous product improvement, POL reserve the right to change specifications without notice.