

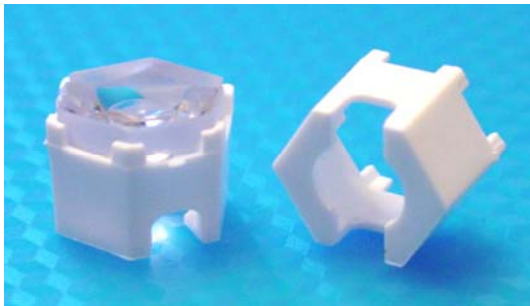


Our Focus is in Plastics

Polymer Optics Ltd.

6 Kiln Ride, Wokingham,
Berks., RG40 3JL, England
Tel/Fax: +44 (0) 1189 893341
www.polymer-optics.co.uk

Star PCB Lens Holder - Part No. 128

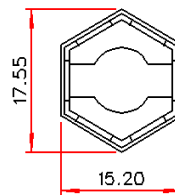
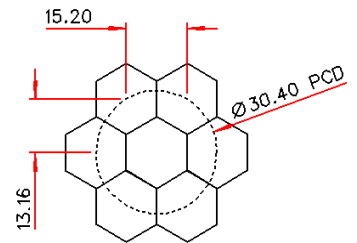
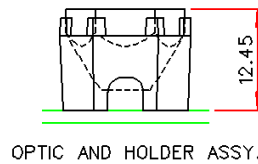
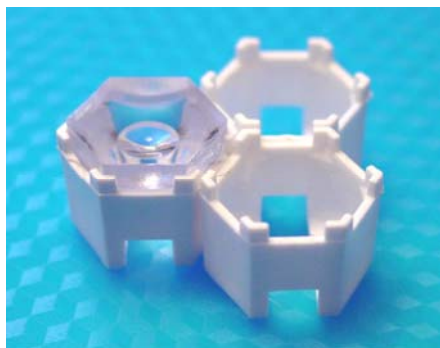


- Designed for use with Polymer Optics “Modular LED Optics”[®] and other custom Polymer Optics designs
- Designed for the LUXEON[®] III and V Star PCB’s which have the emitter recessed into the PCB
- Simply mounts onto PCB and self-aligns to LUXEON[®] Emitter
- Precision moulded in optical grade Polycarbonate for thermal stability and system durability
- Part of the Polymer Optics “Modular LED Optics”[®] range

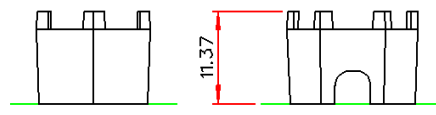
Polymer Optics “Modular LED Optics”[®] design, based on a hexagonal format, allows maximum packing density and assembly flexibility

For LUXEON[®] I Star and all standard LUXEON[®] Emitters on custom populated PCB’s use POL Standard Holder (Part No. 121)

K2 Holder available for LUXEON[®] K2 Emitter



Typical dimensional tolerances to +/-0.2mm



121 Holder and 120 Optic mounted on LUXEON[®] I Star PCB

