



Our Focus is in Plastics

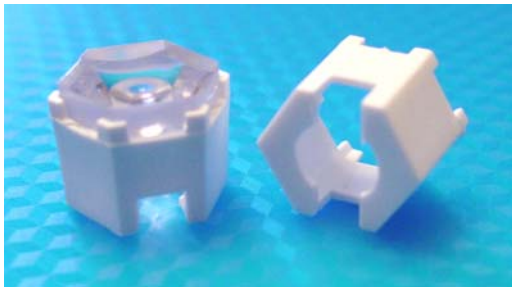
Polymer Optics Ltd.

6 Kiln Ride, Wokingham,
Berks., RG40 3JL, England
Tel/Fax: +44 (0) 1189 893341
www.polymer-optics.co.uk

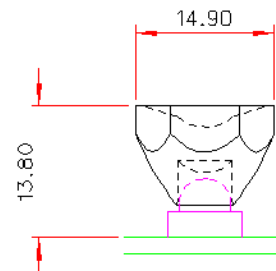
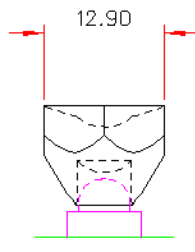
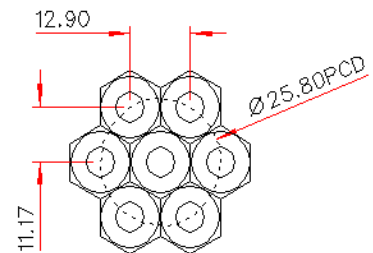
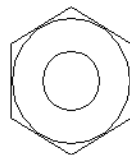
15 Degree LED Collimator Lens - Part No. 201



- Designed for Seoul Semiconductor Z Power P3 and P4 Emitter and Star LED's
- High light collection efficiency of >85%
- Precision moulded in optical grade Polycarbonate for thermal stability and system durability
- Part of the Polymer Optics "Modular LED Optics"® range



Typical dimensional tolerances to +/-0.2mm



Polymer Optics "Modular LED Optics"® design, based on a hexagonal format, allows maximum packing density and assembly flexibility

Holder (Part No. 155) available for mounting optics onto the P3 and P4 High Power LED package.

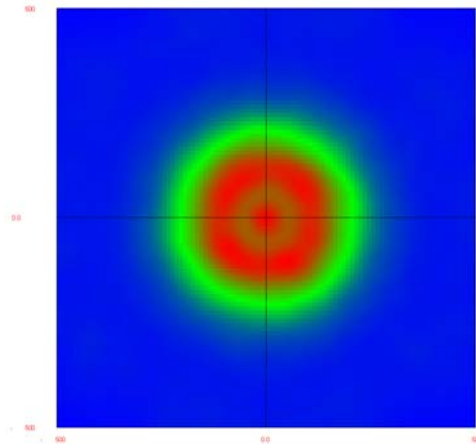


Our Focus is in Plastics

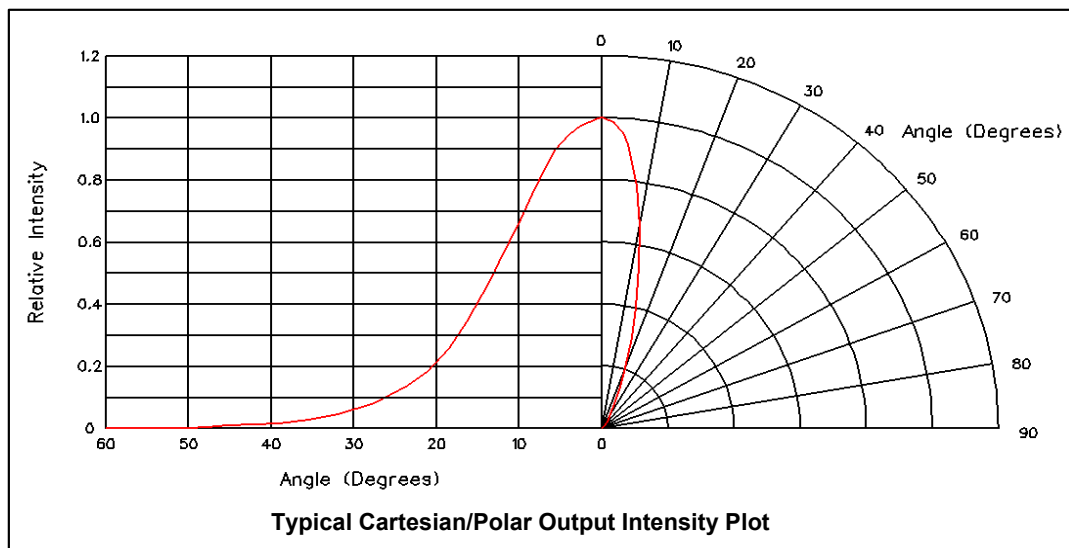
Polymer Optics Ltd.

6 Kiln Ride, Wokingham,
Berks., RG40 3JL, England
Tel/Fax: +44 (0) 1189 893341
www.polymer-optics.co.uk

15 Degree LED Collimator Lens - Part No. 201



Raytrace Simulation of Typical Beam at 1m with 1W White LED



Typical illuminance values using 1W 25 lumen white LED = 9.6 cd/lumen			
Range	0.5m	1m	2m
Illuminance	960 lux	240 lux	60 lux

Performance values given are typical values and will vary dependant on LED binning, colour and drive profile