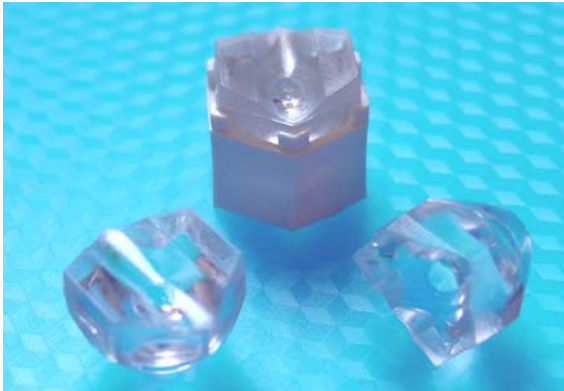


*Our Focus is in Plastics*

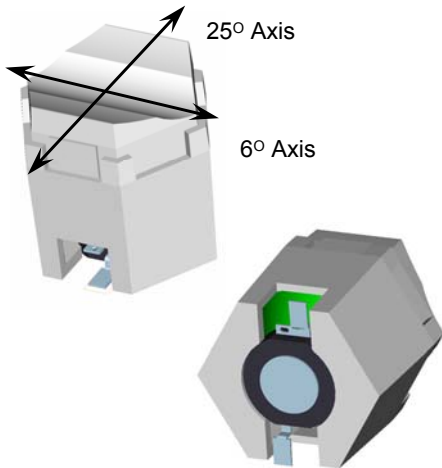
**Polymer Optics Ltd.**

6 Kiln Ride, Wokingham,  
Berks., RG40 3JL, England  
Tel/Fax: +44 (0) 1189 893341  
www.polymer-optics.co.uk

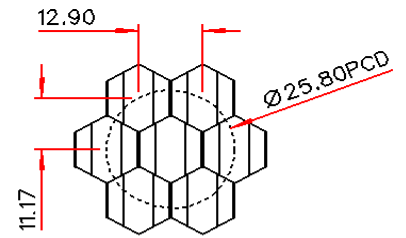
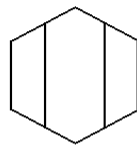
**Diffuse 6x25 Degree LED Collimator Lens - Part No. 216**



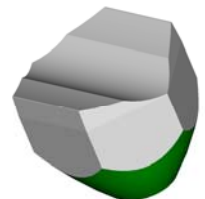
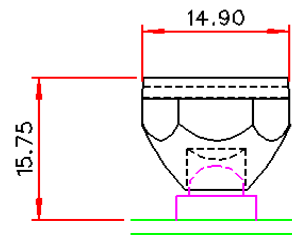
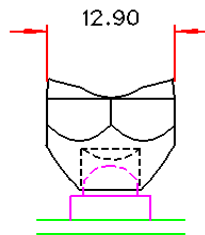
- Designed for Edison Edixeon Emitter and Star LEDs
- High light collection efficiency of >85%
- Diffuse output surface for improved beam uniformity
- Precision moulded in optical grade Polycarbonate for thermal stability and system durability
- Part of the Polymer Optics “Modular LED Optics”® range



Typical dimensional tolerances to +/-0.2mm



NESTED COMPONENTS ON 25,8MM PCD



Polymer Optics “Modular LED Optics”® design, based on a hexagonal format, allows maximum packing density and assembly flexibility

Supplied assembled in Holder (Part No. 121) for mounting the optic directly onto the Edixeon LED package.