

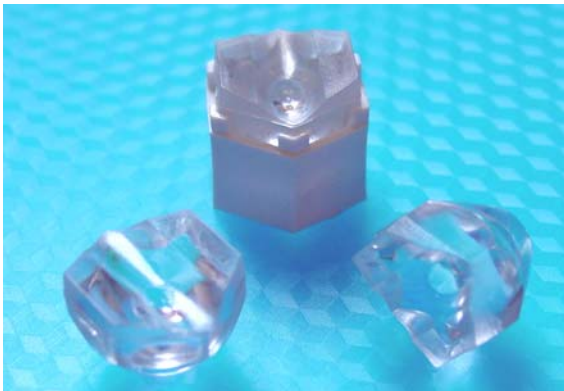


Our Focus is in Plastics

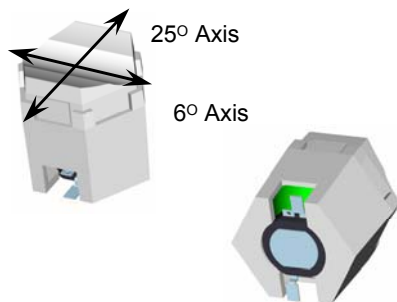
Polymer Optics Ltd.

6 Kiln Ride, Wokingham,
Berks., RG40 3JL, England
Tel/Fax: +44 (0) 1189 893341
www.polymer-optics.co.uk

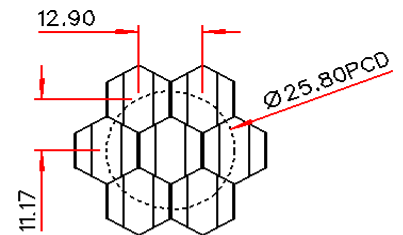
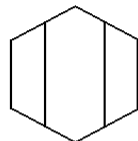
Diffuse 6x25 Degree LED Collimator Lens - Part No. 216



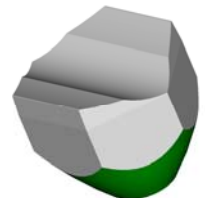
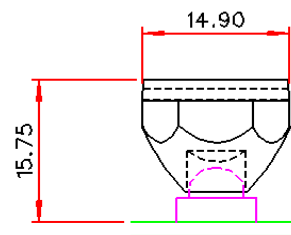
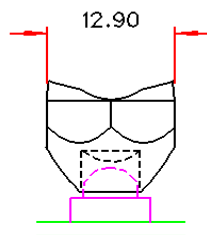
- Designed for Seoul Semiconductor Z Power P3 and P4 Emitter and Star LED's
- High light collection efficiency of >85%
- Diffuse output surface for improved beam uniformity
- Precision moulded in optical grade Polycarbonate for thermal stability and system durability
- Part of the Polymer Optics "Modular LED Optics"® range



Typical dimensional tolerances to +/-0.2mm



NESTED COMPONENTS ON 25,8MM PCD



Polymer Optics "Modular LED Optics"® design, based on a hexagonal format, allows maximum packing density and assembly flexibility

Holder (Part No. 155) available for mounting optics onto the P3 and P4 High Power LED package.