



**Polymer  
Optics  
Limited**

*Our Focus is in Plastics*

**Polymer Optics Ltd.**

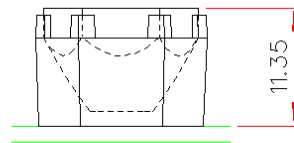
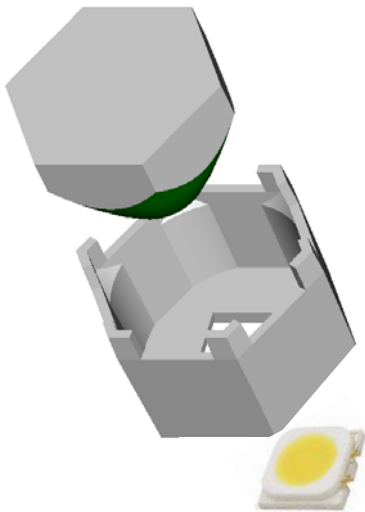
6 Kiln Ride, Wokingham,  
Berks., RG40 3JL, England  
Tel/Fax: +44 (0) 1189 893341  
www.polymer-optics.co.uk

**Stanley 3US LEDs Holder – Part No. 175**

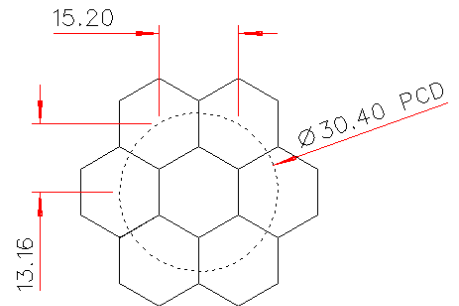
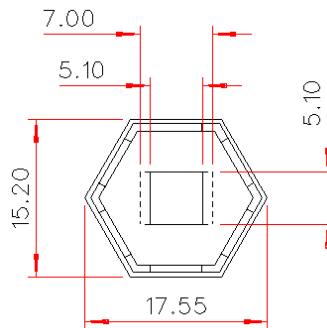


- Designed for use with Polymer Optics “Modular LED Optics”<sup>®</sup> and other custom Polymer Optics designs
- Designed for the Stanley Electric 3US series LEDs
- Simply mounts onto PCB and self-aligns to the 3US LED
- Precision moulded in optical grade Polycarbonate for thermal stability and system durability
- Part of the Polymer Optics “Modular LED Optics”<sup>®</sup> range

Polymer Optics “Modular LED Optics”<sup>®</sup> design, based on a hexagonal format, allows maximum packing density and assembly flexibility

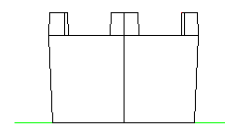
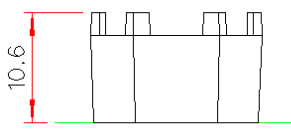


OPTIC AND HOLDER ASSY.



NESTED COMPONENTS ON 30.4MM PCD

Typical dimensional tolerances to +/-0.2mm





*Our Focus is in Plastics*

**Polymer Optics Ltd.**

6 Kiln Ride, Wokingham,  
Berks., RG40 3JL, England  
Tel/Fax: +44 (0) 1189 893341  
www.polymer-optics.co.uk

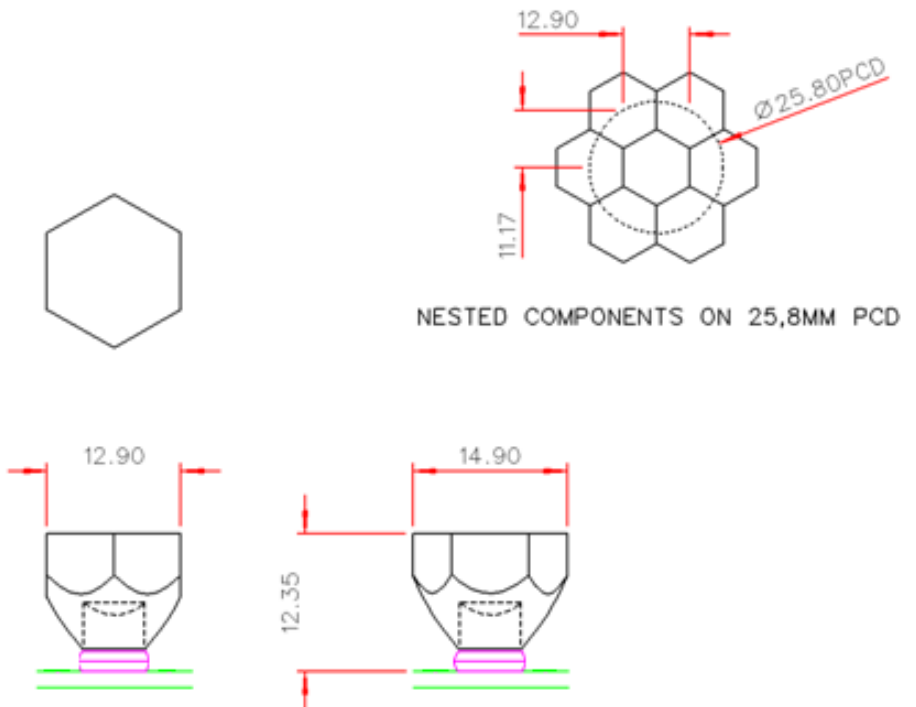
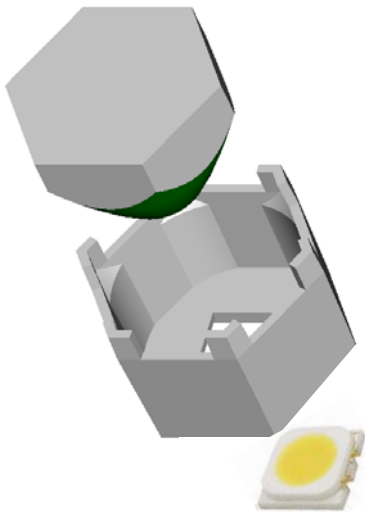
**6 Degree LED Collimator Lens - Part No. 120**



- Designed to operate with Stanley Electric 3US series LEDs
- High light collection efficiency of 85%
- Precision moulded in optical grade Polycarbonate for thermal stability and system durability
- Part of the Polymer Optics “Modular LED Optics”® range

Polymer Optics “Modular LED Optics”® design, based on a hexagonal format, allows maximum packing density and assembly flexibility

Supplied with Holder (Part No. 175) to mount optics directly on to PCB’s. Holder locates on LED package to ensure correct alignment





*Our Focus is in Plastics*

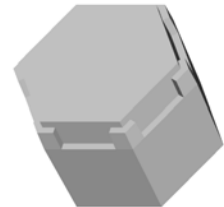
**Polymer Optics Ltd.**

6 Kiln Ride, Wokingham,  
Berks., RG40 3JL, England  
Tel/Fax: +44 (0) 1189 893341  
[www.polymer-optics.co.uk](http://www.polymer-optics.co.uk)

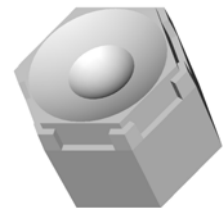
### LED Optics Range for Stanley 3US LEDs

- Designed for use with the Stanley Electric 3US series LEDs
- High light collection efficiency of >85%
- Precision moulded in optical grade Polycarbonate for thermal stability and system durability
- Part of the Polymer Optics “Modular LED Optics”<sup>®</sup> range

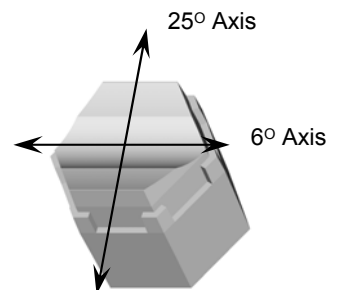
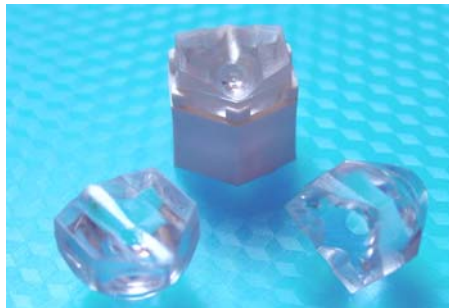
**6 Degree LED Collimator Lens  
Part No. 120**



**25 Degree LED Collimator Lens  
Part No. 124**



**6x25 Degree LED Collimator Lens  
Part No. 126**





*Our Focus is in Plastics*

**Polymer Optics Ltd.**

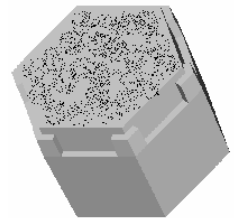
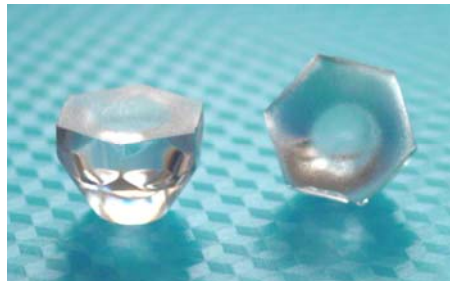
6 Kiln Ride, Wokingham,  
Berks., RG40 3JL, England  
Tel/Fax: +44 (0) 1189 893341  
[www.polymer-optics.co.uk](http://www.polymer-optics.co.uk)

**LED Optics Range for Stanley 3US LEDs**

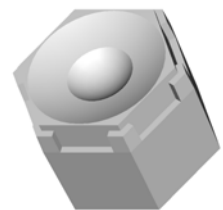
**Single Cell LED Concentrator Lens  
Part No. 141**



**6 Deg Diffuse LED Collimator Lens  
Part No. 185**



**15 Degree LED Collimator Lens  
Part No. 201**





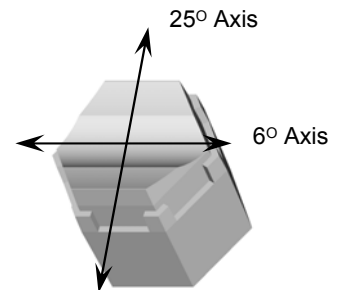
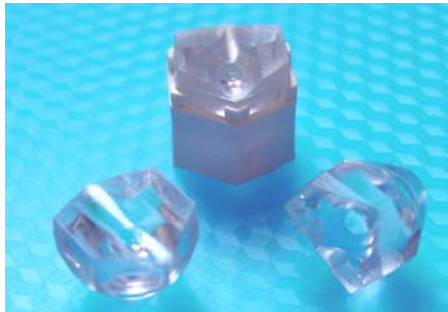
*Our Focus is in Plastics*

**Polymer Optics Ltd.**

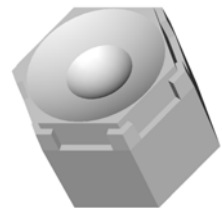
6 Kiln Ride, Wokingham,  
Berks., RG40 3JL, England  
Tel/Fax: +44 (0) 1189 893341  
[www.polymer-optics.co.uk](http://www.polymer-optics.co.uk)

### LED Optics Range for Stanley 3US LEDs

**Diffuse 6x25 Degree LED Collimator  
Part No. 216**



**Diffuse 25 Degree LED Collimator  
Part No. 217**



Polymer Optics "Modular LED Optics"<sup>®</sup> design, based on a hexagonal format, allows maximum packing density and assembly flexibility.







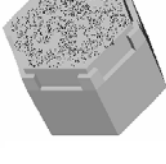


*Our Focus is in Plastics*

**Polymer Optics Ltd.**

6 Kiln Ride, Wokingham,  
Berks., RG40 3JL, England  
Tel/Fax: +44 (0) 1189 893341  
www.polymer-optics.co.uk

**Price List for Stanley 3US Series LED Optic Range**

Product Image	Description	Usage	100-1K Batches	1K-5K Batches	5K-10K Batches	10K+ Batches
 120/175	6° Collimator + Holder for Stanley 3US	All Stanley 3US LEDs	£1.25	£0.98	£0.77	£0.72
 124/175	25° Collimator + Holder for Stanley 3US	All Stanley 3US LEDs	£1.25	£0.98	£0.77	£0.72
 126/175	6°x25° Line + Holder for Stanley 3US	All Stanley 3US LEDs	£1.25	£0.98	£0.77	£0.72
 141/175	Single Cell Concentrator Optic + Holder for Stanley 3US	All Stanley 3US LEDs	£1.25	£0.98	£0.77	£0.72
 185/175	Diffuse 6° Collimator + Holder for Stanley 3US	All Stanley 3US LEDs	£1.25	£0.98	£0.77	£0.72

**\* A minimum order value applies of £50+shipping - All prices “ex-works”  
Please contact POL for quotations on higher volumes and custom variants**

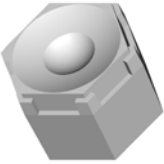




*Our Focus is in Plastics*

**Polymer Optics Ltd.**

6 Kiln Ride, Wokingham,  
Berks., RG40 3JL, England  
Tel/Fax: +44 (0) 1189 893341  
www.polymer-optics.co.uk

**Price List for Stanley 3US Series LED Optic Range**

Product Image	Description	Usage	100-1K Batches	1K-5K Batches	5K-10K Batches	10K+ Batches
 201/175	15° Collimator + Holder for Stanley 3US	All Stanley 3US LEDs	£1.25	£0.98	£0.77	£0.72
 216/175	Diffuse 6°x25° Line + Holder for Stanley 3US	All Stanley 3US LEDs	£1.25	£0.98	£0.77	£0.72
 217/175	Diffuse 25° Collimator + Holder for Stanley 3US	All Stanley 3US LEDs	£1.25	£0.98	£0.77	£0.72

**\* A minimum order value applies of £50+shipping - All prices “ex-works”**

**Please contact POL for quotations on higher volumes and custom variants**