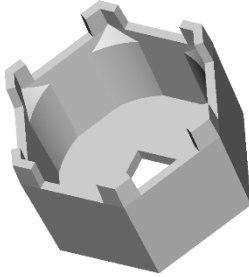
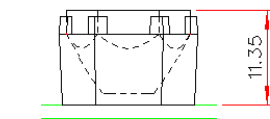


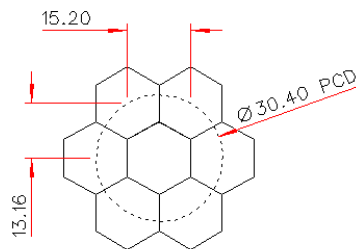
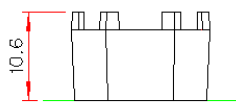
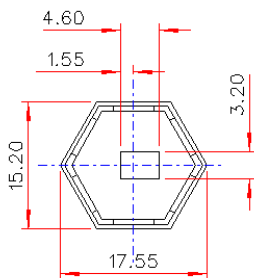
## Lens Holder - Part No. 180



- Designed to fit Luxeon Rebel LED packages or similar devices
  - Simply mounts onto PCB over the LED and self-aligns to the LED package
  - Precision moulded in high quality Polycarbonate for thermal stability and system durability
  - Part of the Polymer Optics “Modular LED Optics”® range
  - Polymer Optics “Modular LED Optics”® design, based on a hexagonal format, allows maximum packing density and assembly flexibility
- POL optics are supplied pre-assembled into the appropriate holder to suit your chosen LED package and are ordered by part number xxx/180, where xxx is the required optic part number.
  - Please see POL’s on-line product catalogue to determine the correct holder and optic combination for your particular LED type

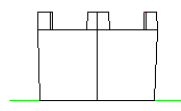


OPTIC AND HOLDER ASSY.



NESTED COMPONENTS ON 30.4MM PCD

Typical dimensional tolerances to +/-0.2mm



The POL optics assembly can be attached to the PCB with a range of adhesives including epoxies, silicone based flexible adhesives, special super-glues, etc. The final choice of the adhesive will depend on the product application working environment. However, for most applications, POL recommends using Loctite 460 which is a cyano-acrylate “super glue” type adhesive, but a specially formulated low odour, low bloom adhesive for clear plastics. This adhesive will not produce the white cloudiness which occurs with other “super-glue” types and forms a strong bond in seconds between the optics holder and the PCB. Further information on this, and other adhesives, can be found at [www.loctite.co.uk](http://www.loctite.co.uk)

Due to continuous product improvement, POL reserve the right to change specifications without notice.

© Copyright Polymer Optics Limited 2016