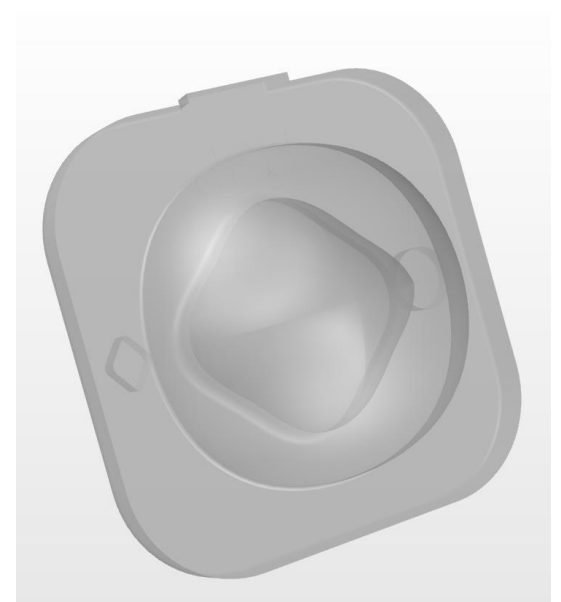
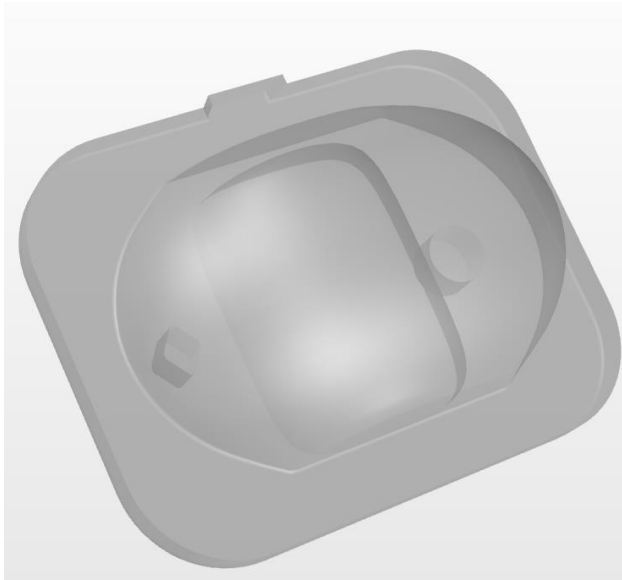


Escape route lighting EN1838

Optic 290, 532, 535 & 536 technical guide

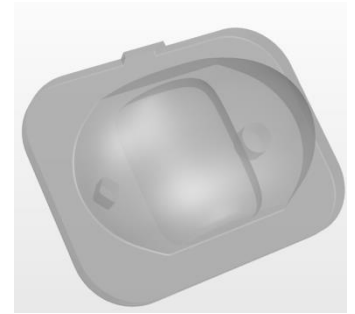


Free-Form Optic Design

- Single optic per LED designed to produce a controlled defined illumination pattern.
- Designed to maximize the use of the light from a single LED hence the minimum battery needed
- Works must 3535 packages and tested with Luxeon TX, Cree XP-G3 & XP-L2
- Mounts over the LED, and retained on MCPCB using glue or mechanical clip
- End unit can be made IP rated
- Located by two common pins that fit in to two location holes in the PCB.
- Manufactured in lens grade Polycarbonate

290 Corridor optic

Designed to give even illuminance this 4x0.8 optic will produce a rectangular beam which illuminates an area 4x the mounting height in length and 0.8x the mounting height in width.

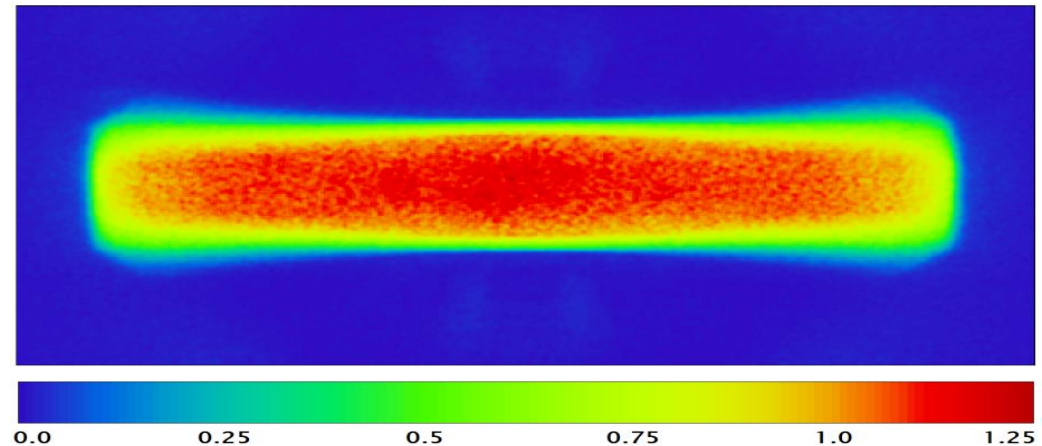


Average illuminance mounted at a height of 2.5m with a 25 lumen 1mm die size Lambertian LED = 1 Lux

Performance values given are typical values and will vary dependent on LED type, binning, colour and drive profile.

Due to continuous product improvement, POL reserve the right to change specifications without notice.

False Colour Map of Illuminance Profile

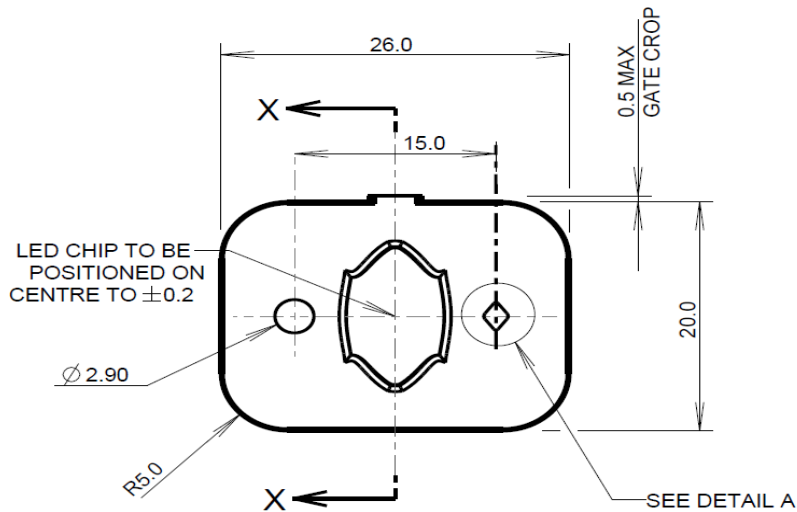
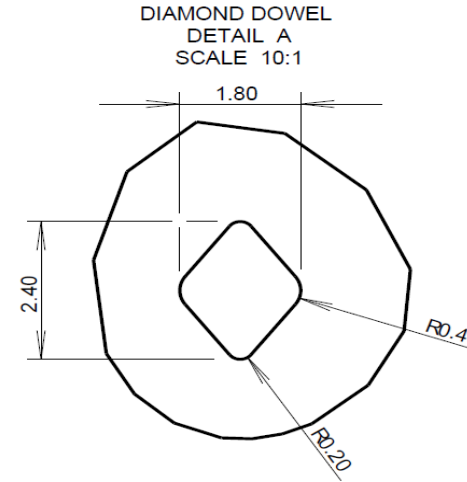
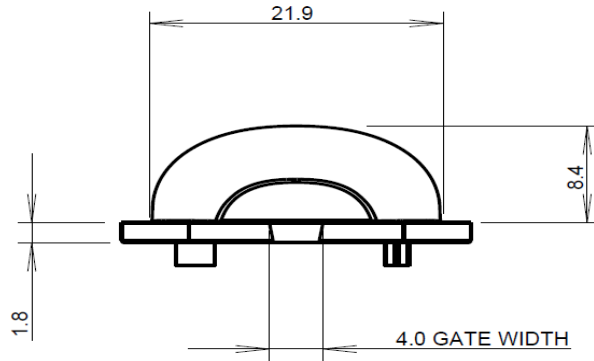




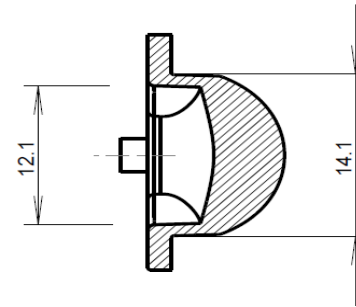
290 Corridor optic

© 2010 POLYMER OPTICS LTD

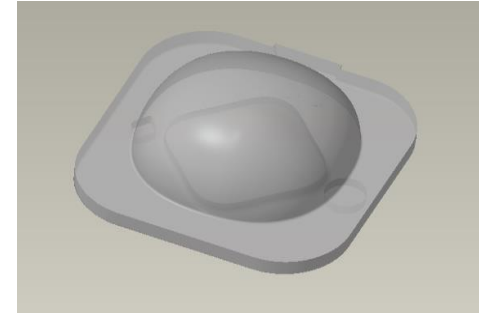
MATERIAL: POLYCARBONATE



SECTION X-X



532 Optic for 2.4X height Narrow



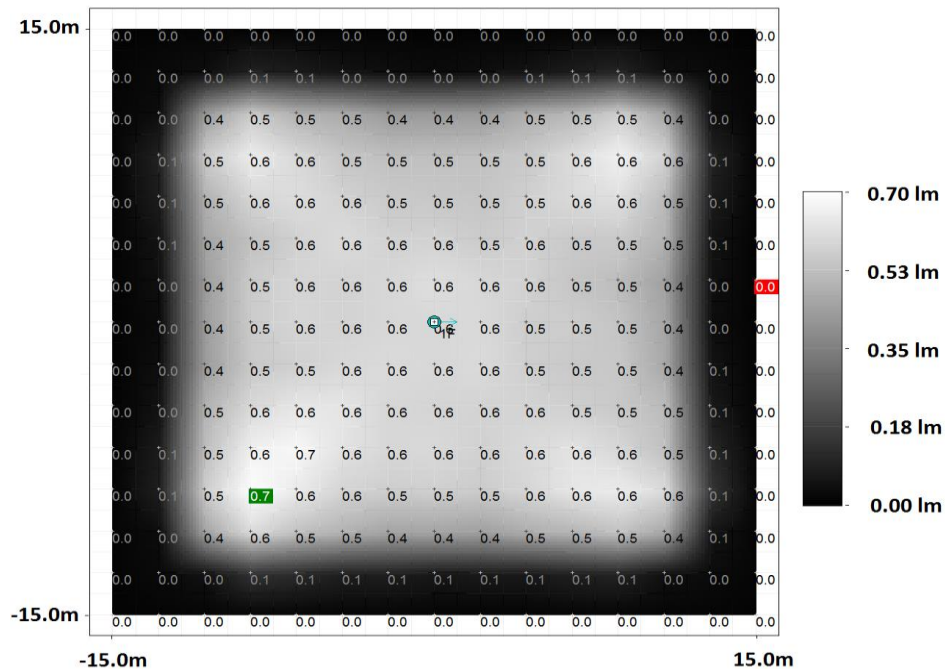
Designed to give even illuminance over a square area using a single LED. For ceiling luminaires mounted in a square pattern separated by up to 2.4x the mounting height.

Measured Illuminance Map Of 275 Lumen Output Luxeon Rebel ES LED Mounted At 6m Above Floor Level

Exceptionally uniform illumination giving maximum to minimum ratios as low as 1.6:1

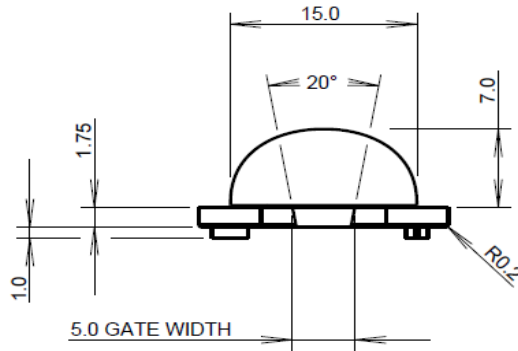
Performance values given are typical values and will vary dependent on LED type, binning, colour and drive profile.

Due to continuous product improvement, POL reserve the right to change specifications without notice.

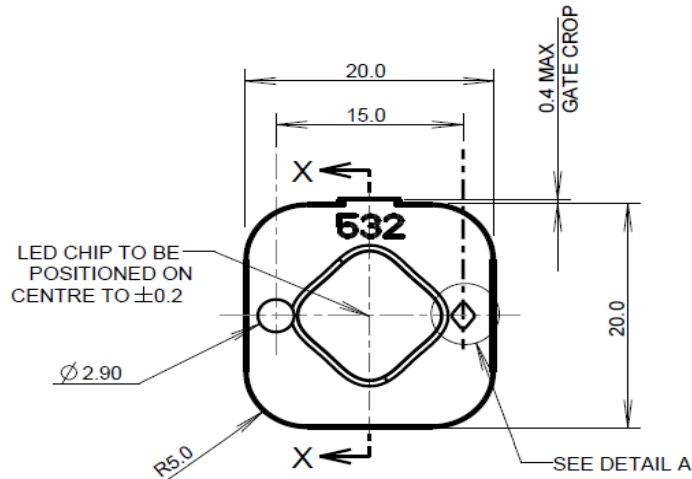
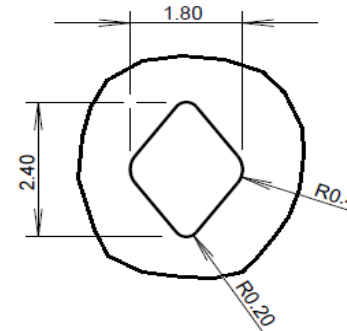


532 Optic for 2.4X height

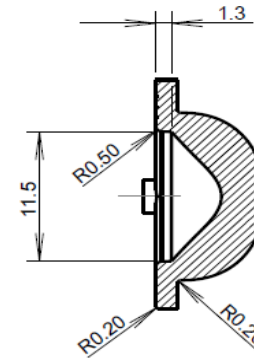
MATERIAL: POLYCARBONATE



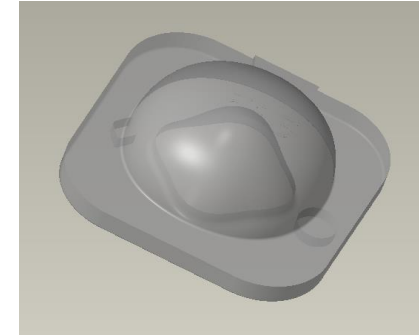
DIAMOND DOWEL
DETAIL A
SCALE 10:1



SECTION X-X



535 Optic for 3.33X height Medium



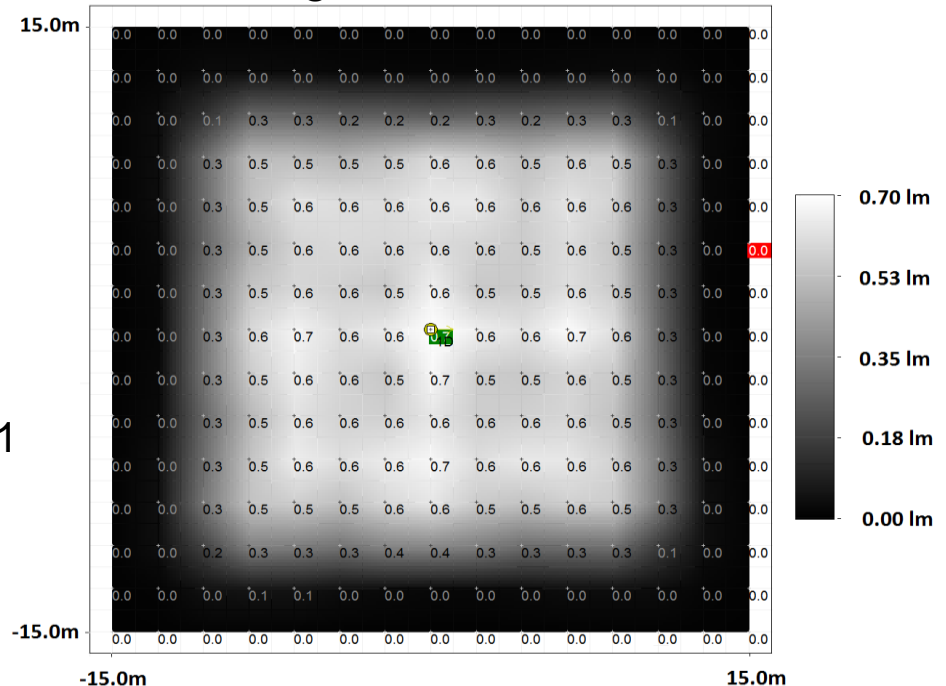
Designed to give even illuminance over a square area using a single LED. For ceiling luminaires mounted in a square pattern separated by up to 3.33x the mounting height.

Measured Illuminance Map Of 240 Lumen Output
Luxeon Rebel ES LED Mounted At 6m Above Floor Level

Exceptionally uniform illumination giving maximum to minimum ratios as low as 1.4:1

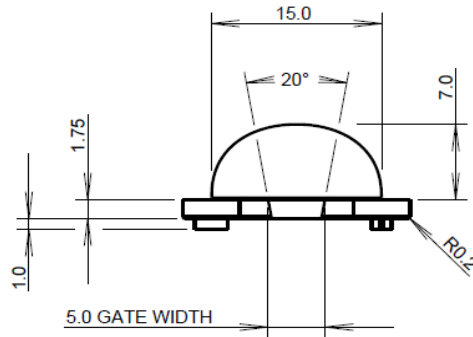
Performance values given are typical values and will vary dependent on LED type, binning, colour and drive profile.

Due to continuous product improvement, POL reserve the right to change specifications without notice.

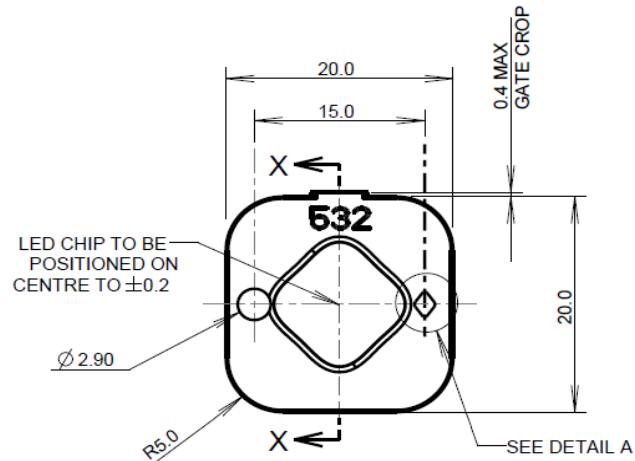
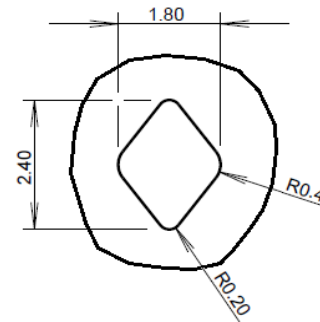


535 Optic for 3.33X height

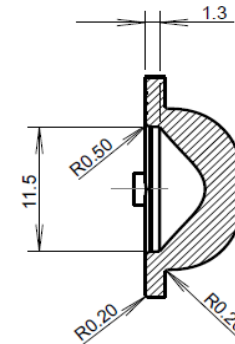
MATERIAL: POLYCARBONATE



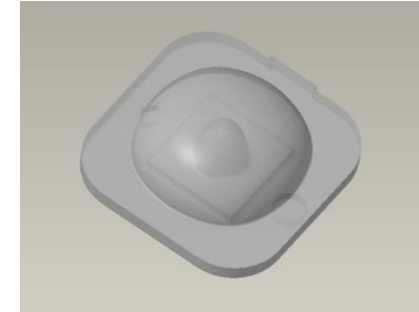
DIAMOND DOWEL
DETAIL A
SCALE 10:1



SECTION X-X



536 Optic for 5.5X height Wide



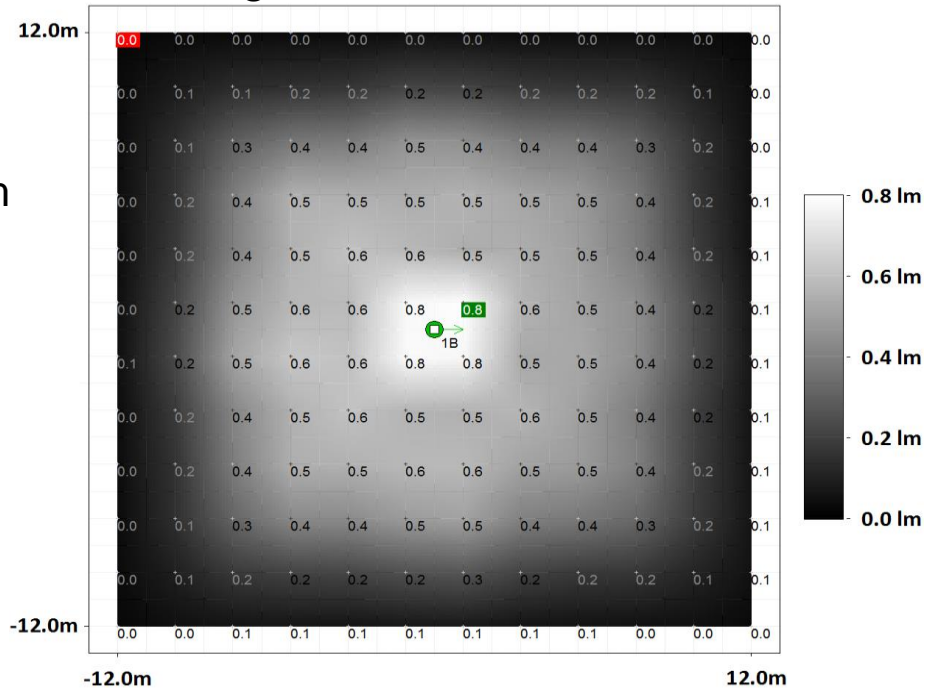
Designed to give even illuminance over a square area using a single LED. For ceiling luminaires mounted in a square pattern separated by up to 5.5X the mounting height.

Measured Illuminance Map Of 165 Lumen Output Luxeon Rebel ES LED Mounted At 3m Above Floor Level

Exceptionally uniform illumination giving maximum to minimum ratios as low as 1.6:1

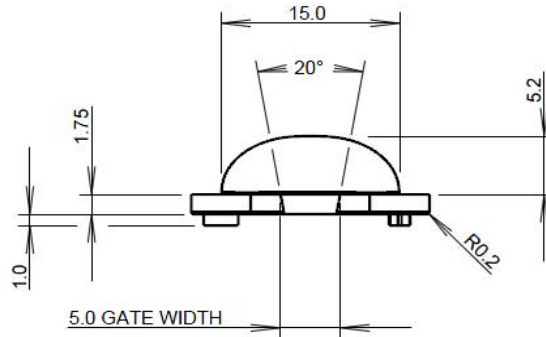
Performance values given are typical values and will vary dependent on LED type, binning, colour and drive profile.

Due to continuous product improvement, POL reserve the right to change specifications without notice.

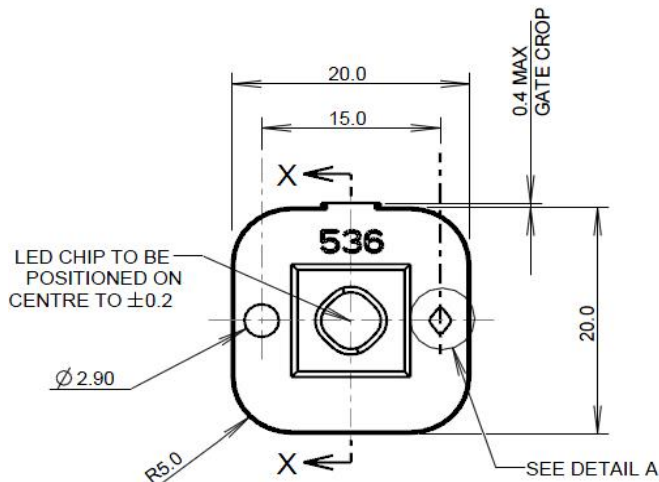
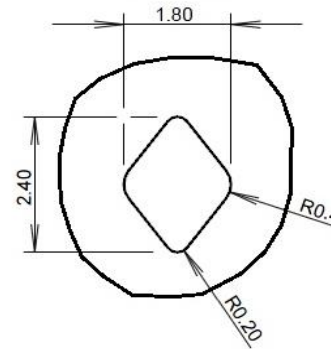


536 Optic for 5.5X height

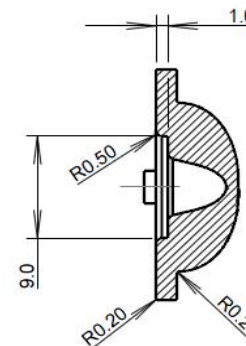
MATERIAL: POLYCARBONATE



DIAMOND DOWEL
DETAIL A
SCALE 10:1



SECTION X-X



Key Facts

- Moulding in optical grade PC
- Location to PCB in 2 places
- Sold in packs of 400
- Exceptionally uniform to give the best ratios
- Simple to use for a number of different outputs
- Cutting edge FreeForm design
- Works with many industry standard LED's
- Samples available for development
- Development MCPCB's also stocked

Contact us

Ian Bryant
Sales & Marketing Manager

ian.bryant@polymer-optics.co.uk
+44 (0) 774 0205 338