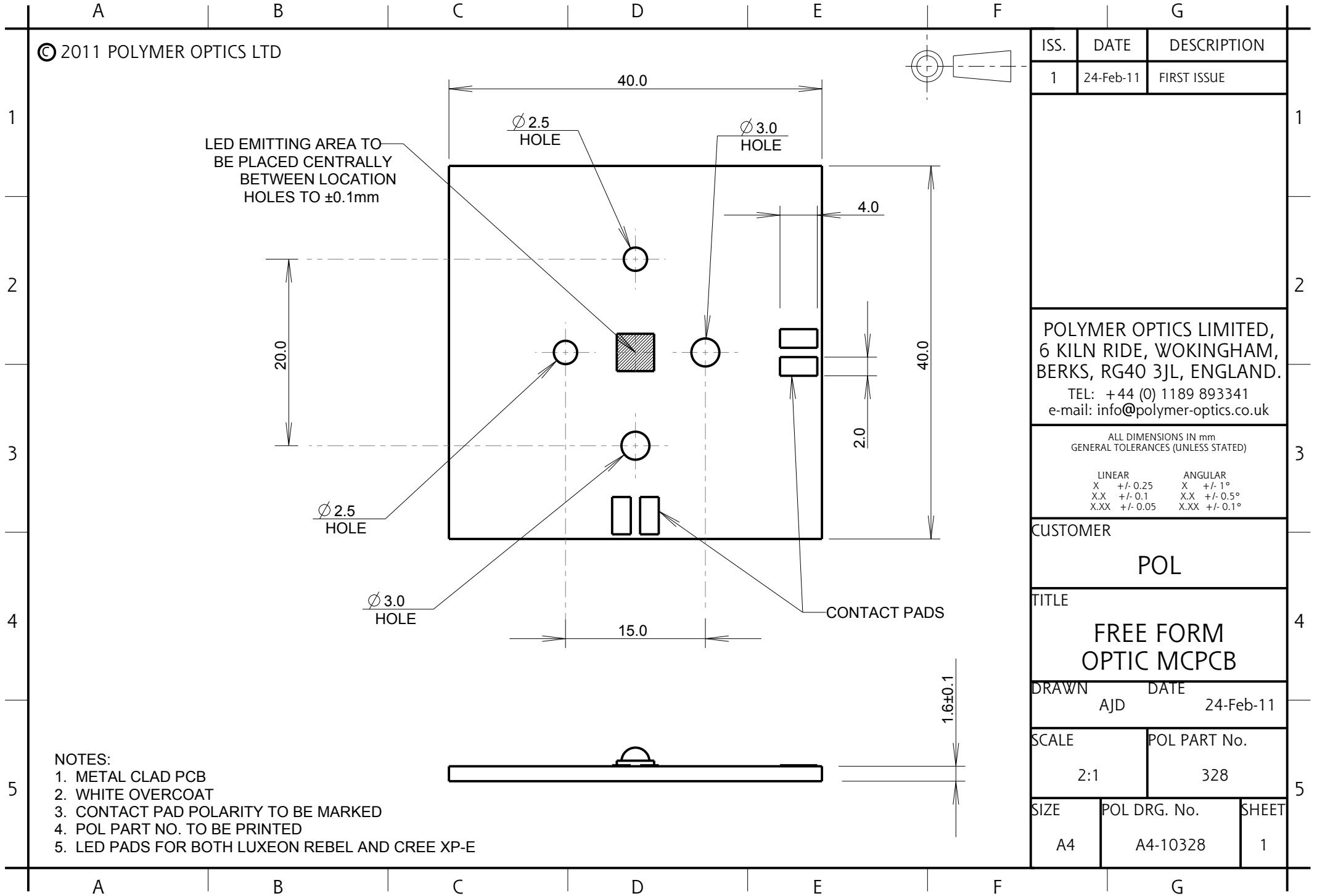


© 2011 POLYMER OPTICS LTD



LED EMITTING AREA TO BE PLACED CENTRALLY BETWEEN LOCATION HOLES TO ±0.1mm

NOTES:

1. METAL CLAD PCB
2. WHITE OVERCOAT
3. CONTACT PAD POLARITY TO BE MARKED
4. POL PART NO. TO BE PRINTED
5. LED PADS FOR BOTH LUXEON REBEL AND CREE XP-E

ISS.	DATE	DESCRIPTION								
1	24-Feb-11	FIRST ISSUE								
<p>POLYMER OPTICS LIMITED, 6 KILN RIDE, WOKINGHAM, BERKS, RG40 3JL, ENGLAND. TEL: +44 (0) 1189 893341 e-mail: info@polymer-optics.co.uk</p>										
<p>ALL DIMENSIONS IN mm GENERAL TOLERANCES (UNLESS STATED)</p> <table border="0"> <tr> <td>LINEAR</td> <td>ANGULAR</td> </tr> <tr> <td>X +/- 0.25</td> <td>X +/- 1°</td> </tr> <tr> <td>X.X +/- 0.1</td> <td>X.X +/- 0.5°</td> </tr> <tr> <td>X.XX +/- 0.05</td> <td>X.XX +/- 0.1°</td> </tr> </table>			LINEAR	ANGULAR	X +/- 0.25	X +/- 1°	X.X +/- 0.1	X.X +/- 0.5°	X.XX +/- 0.05	X.XX +/- 0.1°
LINEAR	ANGULAR									
X +/- 0.25	X +/- 1°									
X.X +/- 0.1	X.X +/- 0.5°									
X.XX +/- 0.05	X.XX +/- 0.1°									
CUSTOMER										
POL										
TITLE										
FREE FORM OPTIC MCPCB										
DRAWN		DATE								
AJD		24-Feb-11								
SCALE		POL PART No.								
2:1		328								
SIZE	POL DRG. No.	SHEET								
A4	A4-10328	1								